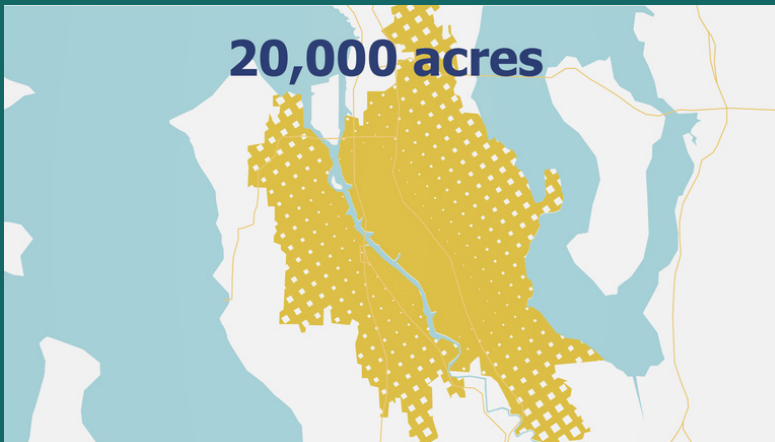


# CONTROLLING POLLUTION TO THE DUWAMISH RIVER (SOURCE CONTROL): A KITCHEN ANALOGY



The Lower Duwamish Waterway Superfund Site is 5 miles long.

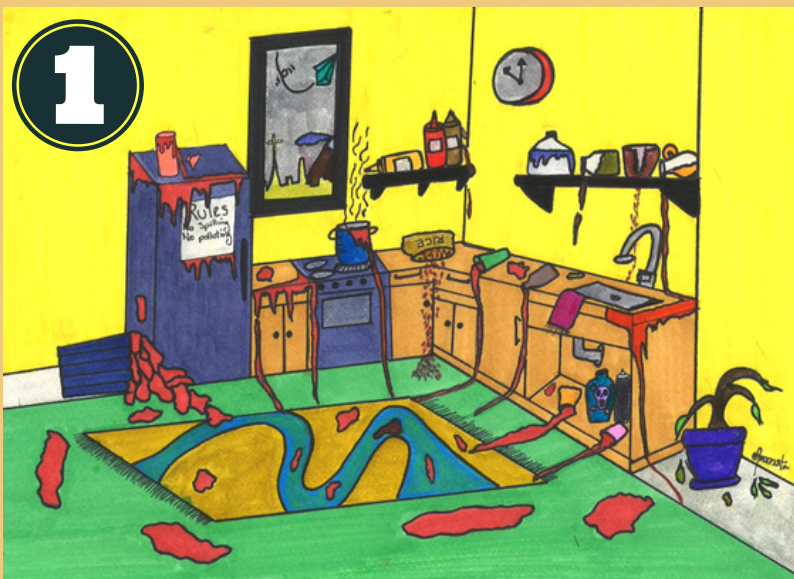
## THE DUWAMISH RIVER SUPERFUND SITE



Superfund sites are locations polluted with hazardous materials that can harm human health and/or the environment. The US Environmental Protection Agency manages the cleanup of these sites.

Within this area, sources of pollution are identified and removed or reduced so that they don't reach the surface water and sediments of the river. This is called **source control**.

**Source control** is led by the Washington State Department of Ecology.



If you think of your kitchen floor as the Lower Duwamish Waterway Superfund Site (the river itself), then think of your kitchen counters as the land around the river.

Most of the mess in your kitchen happens because you're using the counters and stove, and your floor gets dirty because the crumbs or spills on the counter make their way onto the floor.

The mud at the bottom of the river is primarily polluted from past practices in waste disposal, industrial uses, combined sewer overflow pipes, and stormwater outfall pipes.



To clean up your floor (the Lower Duwamish Superfund Site) you could mop, but if the counters (the land around the river) are still dirty then your floors will probably keep getting dirty.

Also, mopping is a lot of work and shouldn't be necessary every day! The easiest way to keep your kitchen floor clean is to first clean the counters.



After the counters (the area around the river) are cleaned, the floor (the Lower Duwamish Waterway Superfund site) can be cleaned up.

We're all working to control sources around the river so we don't have to re-clean the river's sediment later.

## LEARN MORE ABOUT SOURCE CONTROL

JHA VIDEO:

<https://justhealthaction.org/videos/>

DRCC SC PAGE:

<https://www.drcc.org/sources-of-pollution-to-the-river>

JHA PAGE:

<https://justhealthaction.org/fact-sheets/>



This material is funded through a Public Participation Grant from the Washington State Department of Ecology. The content was reviewed for grant consistency but is not necessarily endorsed by the agency.